

# Full-Size SERIES 380 Modular High-Relief Externally Piloted Regulators

## PRH380 Models Port Sizes: 3/8, 1/2, 3/4

### Available Color Caps

Yellow  
(optional)



Red  
(optional)



Blue  
(optional)



Grey  
(standard)



Model Shown: PRH380-6G

### SPECIFICATIONS

**Ambient/Media Temperature:**

40° to 175°F (4° to 79°C).

**Body:** Zinc.

**Dome:** Zinc.

**Fluid Media:** Compressed air.

**Inlet Pressure:** 300 psig (21 bar) maximum.

**Outlet Pressure:** Adjustable 0 – 250 psig (0 – 17 bar).

**Pilot Ports:** 1/4 NPTF

**Pressure Gauge:** 0 to 200 psig (14 bar); 1/4 NPT gauge ports front and rear.

**Seals:** Nitrile.

**Valve:** Brass.

**Valve Cap:** Nylon.

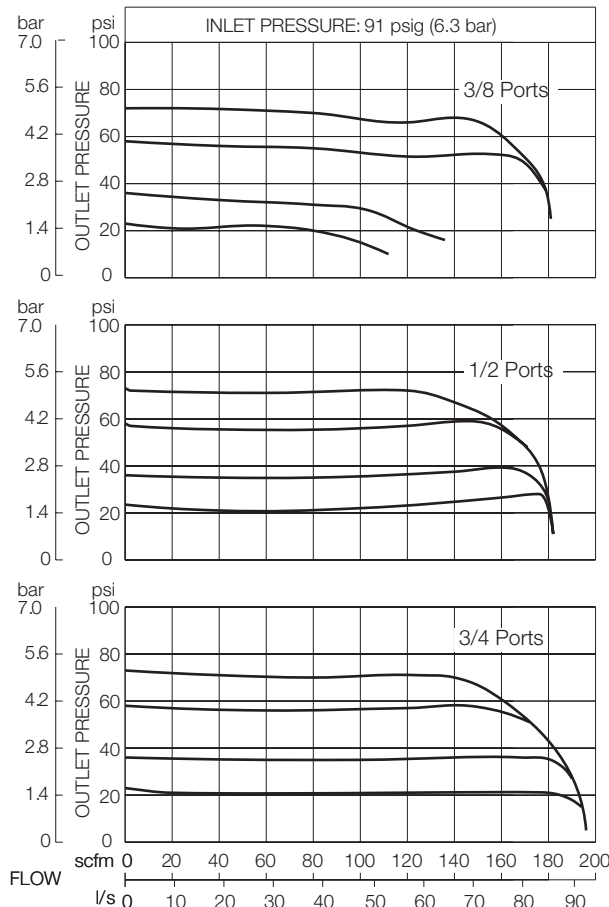
- ◆ Modular or inline mounting.
- ◆ Self-relieving diaphragm design.
- ◆ Pressure gauge.
- ◆ **NPTF** port threads; optional **SAE** or **BSPP** threads.

**Note:** Pilot (control) regulators (order separately).

◆ General purpose applications order R56M-2, R60-2, R67-2, R100-2, or R380-3

◆ Precision applications order IR100-2, R57M-2, IR380-3 or ER valve

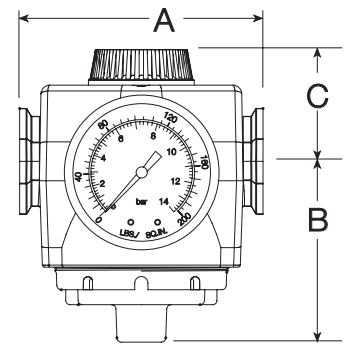
### FLOW CHARTS



## DIMENSIONS inches (mm)

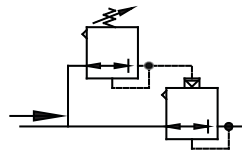
A	B	C	Depth †	Weight † lb (kg)
3.5 (87)	2.4 (62)	1.6 (40)	2.9 (73)	2.20 (1.00)

† Less gauge.



### ISO Symbol

With conventional  
pilot regulator



## ORDERING INFORMATION

Change the letters in the sample model number below to specify the regulator you want.

**NOTE:** Order a pilot operator such as **R55-2**, **R56-2**, or **IR100-2** separately.

**PRH380 - 3 Y G W**

### PORT SIZE

3/8 NPTF.....	3
1/2 NPTF.....	4
3/4 NPTF.....	6
9/16-18 UNF SAE .....	S6
3/4-16 UNF SAE .....	S8
7/8-14 UNF SAE .....	S10

### PORT TYPE

NPTF Threads .....	Leave Blank
BSP threads .....	W

### OPTIONS

None .....	Leave Blank
0-200 PSI Gauge .....	G

**OPTIONS** (More than one option can be chosen)

None .....	Leave Blank
Non-relieving .....	A
Cap Color: Grey is standard	
MP yellow .....	C1
Red.....	C2
Mid blue.....	C3

### MOUNTING BRACKETS

See page 280.