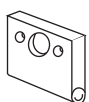


## SENTRY Modular Accessories

Sentry modular units use end plates secured with screws to hold the ports in place, and also to serve as mounting brackets. Short screws secure the end plates when a single module is used; long screws when two or more modules are used. Parts required for assembly are as follows:



**Sentry  
End Plate**

Item	Part Number	Quantity Required		
		1 Unit	2 Units	3 Units
End Plate	10R-10	2	2	2
Short Screw	10R-18	4	2	0
Long Screw	10R-19	0	2	4
Small O-ring	103-95	1	1	1
Large O-ring	33-53	1	2	3
Ports		See Chart at Right		

Sentry assemblies can be fitted with either threaded pipe ports or ports for tubing. The sizes available are shown below. Two ports required for each assembly.

PIPE PORTS		TUBING PORTS	
Pipe Size	Port Number	Tubing Size	Port Number
G 1/8	10R-21-1/8W	1/4	A10R-21-04
G 1/4	10R-21-1/4W	3/8	A10R-21-06
1/8 NPT	10R-21-1/8	4 mm	A10R-21-M4
1/4 NPT	10R-21-1/4	6 mm	A10R-21-M6
		8 mm	A10R-21-M8
		10 mm	A10R-21-M10

## GUARDSMAN and VANGUARD Modular Accessories



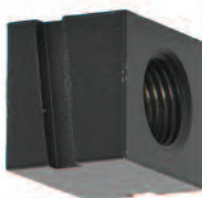
### MODULAR CONNECTORS

**GUARDSMAN** and **VANGUARD** modular components can be joined or removed quickly with these specially designed connectors. Each connector includes an O-ring assembly which forms an air-tight seal between modules. **FRL** and other assemblies include the required modular connectors between components, unless the assembly has been specifically ordered for connection with pipe nipples.

Connectors can be ordered as part number KA30-04.

### MODULAR FEMALE PORT

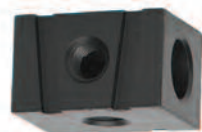
Used to connect modular units to piping at inlet or outlet.



Port Size	Female Port Part Number
1/4	30-12-1/4
3/8	30-12-3/8
1/2	30-12-1/2
3/4	30-12-3/4

### MODULAR EXTRA PORTS

Used before or after a modular unit to supply three auxiliary 1/4 ports.



Port Size	Female Port Part Number
All	30-13

### MODULAR MALE PORT

Used to connect modular units to non-modular units. Also allows right-angle connections by using the side ports or extra ports shown at the right.



Port Size	Male Port Part Number
1/4	30-11-1/4
3/8	30-11-3/8
1/2	30-11-1/2
3/4	30-11-3/4