

# Full-Size VANGUARD Modular Integral Filter/Regulators

# CFDR100 Models Port Sizes: 1/4, 3/8, 1/2, 3/4



Model Shown: CFDR100-6

## SPECIFICATIONS

### Ambient/Media Temperature:

Plastic Bowl, all drain types: 40° to 125°F (4° to 52°C).  
Metal Bowl, manual & auto drains: 40° to 175°F (4° to 79°C).  
Metal Bowl, float drains: 40° to 150°F (4° to 66°C).

**Body:** Zinc.

**Bowl:** 8-Ounce (240-ml) capacity polycarbonate plastic with steel shatterguard; optional zinc bowl with clear nylon sight glass.

**Dome:** Nylon. Aluminum with option H spring.

**Bowl Drain:** Internal automatic drain; optional manual drain, internal float drain, or external Hydro-Jector drain.

**Filter Element:** 5- $\mu$ m-rated polyethylene; optional 5- $\mu$ m, 20- $\mu$ m, or 40- $\mu$ m sintered bronze.

**Fluid Media:** Compressed air.

### Inlet Pressure:

Minimum: 15 psig (1 bar) with automatic drain, 30 psig (2 bar) with internal float drain.  
Plastic bowl: 150 psig (10 bar) maximum.  
Metal bowl: 200 psig (14 bar) maximum.

**Knob:** Acetal.

**Outlet Pressure:** Adjustable up to 125 psig (8.6 bar).

**Pressure Adjustment Locking Key:** Removable.

**Pressure Gauge:** 0 to 200 psig (14 bar); 1/4 NPT gauge ports front and rear.

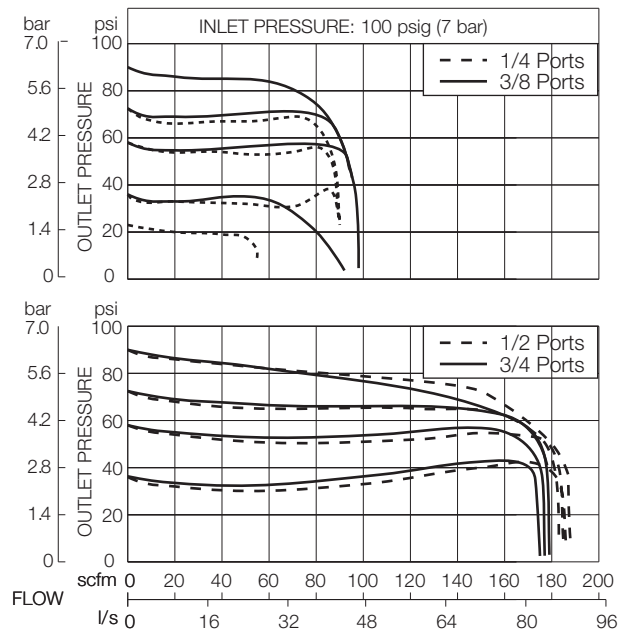
**Panel Mounting:** 2-1/16 inch (52 mm) hole required.

**Seals:** Nitrile

- ◆ Filter and regulator consolidated in a single assembly.
- ◆ Modular assembly and mounting.
- ◆ 5- $\mu$ m-rated polyethylene filter element; optional sintered bronze elements.
- ◆ High-strength polycarbonate plastic filter bowl with steel shatterguard; optional metal bowl with clear nylon sight glass.
- ◆ Internal automatic drain; optional manual drain, internal float drain, or external Hydro-Jector drain.
- ◆ Self-relieving diaphragm-type regulator; non-relieving optional.
- ◆ Pressure adjustment locking key.
- ◆ Pressure gauge.
- ◆ NPTF port threads; optional BSPP threads.

## FLOW CHARTS

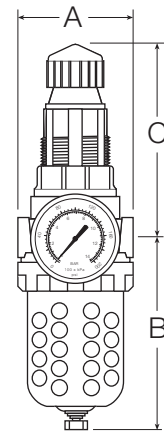
Standard 5- $\mu$ m Element



## DIMENSIONS inches (mm)

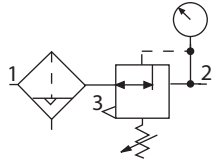
Bowl	A	B *	C **	Depth †	Weight †
					lb (kg)
Plastic	3.5 (89)	5.8 (146)	5.8 (146)	3.5 (89)	2.50 (1.15)
Metal	3.5 (89)	6.4 (163)	5.8 (146)	3.5 (89)	2.55 (1.17)

\* Bowl removal clearance: add 3.1 (79).  
 \*\* Dome removal clearance: add 0.63 (16).  
 † Less gauge.



### ISO Filter/Regulator Symbol

Automatic Drain  
Self-relieving



## REPLACEMENT FILTER ELEMENT KITS

Element Type	Kit Number
5-µm polyethylene (Std element).....	KA103-03PE5
5-µm bronze .....	KA103-03E5
20-µm bronze.....	KA103-03E4
40-µm bronze.....	KA103-03E3

## ORDERING INFORMATION

Change the letters in the sample model number below to specify the filter/regulator you want.

**B C FD R100-2 Y P W**

### BOWL TYPE

Plastic bowl..... Leave Blank  
 Metal bowl..... B

### FILTER DRAIN

Internal automatic drain ..... FD  
 Manual drain..... F  
 Internal float drain ..... F5A  
 (Plastic stem). use 'leave blank'  
 option under 'BOWL TYPE'.  
 Internal float drain ..... F6A  
 (Brass stem). use 'B' option  
 under 'BOWL TYPE'.  
 External Hydro-Jector drain ..... FE

### PORT SIZE

1/4 NPTF..... 2  
 3/8 NPTF..... 3  
 1/2 NPTF..... 4  
 3/4 NPTF..... 6

### PORT TYPE

NPTF threads ..... Leave Blank  
 BSPP threads ..... W

### OPTIONS (More than one option can be chosen. Add in alphabetical order)

0-200 psig Gauge ..... Leave Blank  
 No psig Gauge ..... NG  
 Mounting nut ..... P

### OPTIONS (More than one option can be chosen. Add in alphabetical order)

None..... Leave Blank  
 Non-relieving ..... A  
 Sintered bronze filter element:

5-µm rating ..... E5  
 20-µm rating ..... E4  
 40-µm rating ..... E3

### Adjusting springs:

0-20 psig (0-1.4 bar) ..... L20  
 0-175 psig (0-12 bar) ..... H\*\*  
 0-50 psig (0-3.4 bar) ..... L

Less Drain Cock ..... LDC  
 (1/4-NPT female port instead.)

Use Manual drain option under  
**BOWL DRAIN** section)

Metal Dome ..... MD  
 Limit maximum psig setting .... M\*  
 Tee handle..... T

\* Insert maximum limited pressure.

\*\* H option spring includes metal dome.

## MOUNTING BRACKETS

See page 346.