

# Full-Size SERIES 380 Modular External Relief Piloted Regulator

## PRH380 Models Port Sizes: 3/8, 1/2, 3/4

### Available Color Caps



Model Shown: PRH380-6G

- ◆ Modular or inline mounting.
- ◆ Self-relieving diaphragm design.
- ◆ Pressure gauge.
- ◆ NPTF port threads; optional BSPP threads.

**Note:** Pilot (control) regulators (order separately).

- ◆ General purpose applications order R56M-2, R60-2, R67-2, R100-2, or R380-3
- ◆ Precision applications order IR100-2, R57M-2, IR380-3 or ER valve

### SPECIFICATIONS

**Ambient/Media Temperature:**

40° to 175°F (4° to 79°C).

**Body:** Zinc.

**Dome:** Zinc.

**Fluid Media:** Compressed air.

**Inlet Pressure:** 300 psig (21 bar) maximum.

**Outlet Pressure:** Adjustable 0 – 250 psig (0 – 17 bar).

**Pilot Ports:** 1/4 NPTF

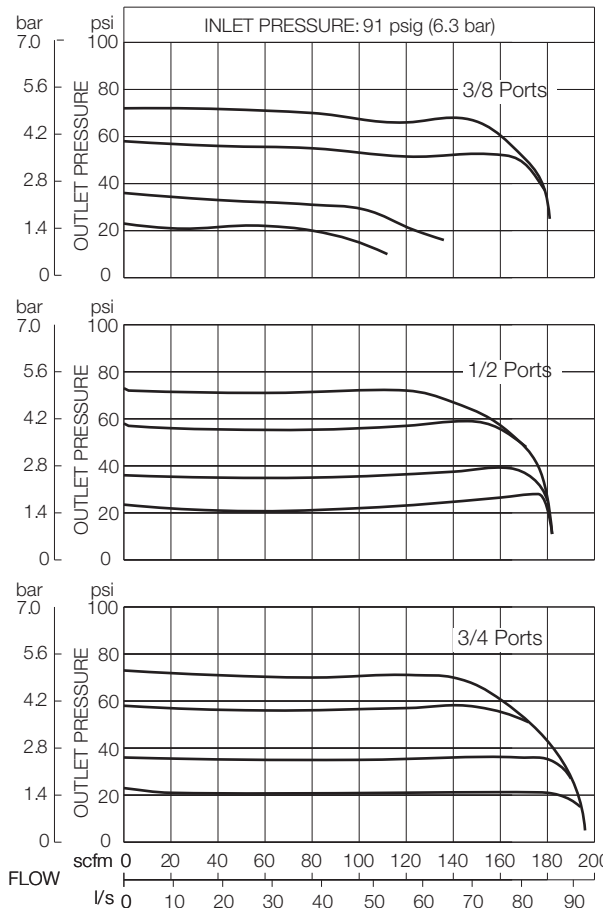
**Pressure Gauge:** 0 to 200 psig (14 bar); 1/4 NPT gauge ports front and rear.

**Seals:** Nitrile.

**Valve:** Brass.

**Valve Cap:** Nylon.

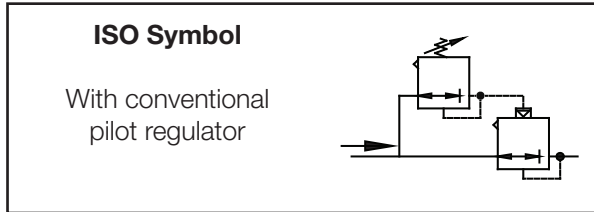
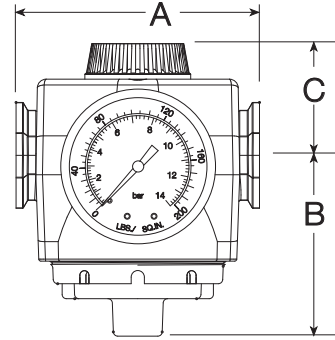
### FLOW CHARTS



**DIMENSIONS** inches (mm)

				Weight †
A	B	C	Depth †	lb (kg)
3.5 (87)	2.4 (62)	1.6 (40)	2.9 (73)	2.20 (1.00)

† Less gauge.



**ORDERING INFORMATION**

Change the letters in the sample model number below to specify the regulator you want.

**NOTE:** Order a pilot operator such as **R55-2**, **R56-2**, or **IR100-2** separately.

**PRH380 - 3 Y G W**

**PORT SIZE**

- 3/8 NPTF..... 3
- 1/2 NPTF..... 4
- 3/4 NPTF..... 6

**PORT TYPE**

- NPTF threads ..... Leave Blank
- BSP threads ..... W

**OPTIONS**

- None ..... Leave Blank
- 0-200 PSI Gauge ..... G

**OPTIONS** (More than one option can be chosen. Add in alphabetical order)

- None ..... Leave Blank
- Non-relieving ..... A
- Cap Color: Grey is standard
  - MP yellow ..... C1
  - Red..... C2
  - Mid blue..... C3

**MOUNTING BRACKETS**  
See page 320.

Full-Size VANGUARD Modular External Relief Piloted Regulator, PRH380