

COMPACT Manual control high-flow / exhaust lockout valve and DPB (Delayed-Pressure-Buildup) lockout Valve

V382 & V383 Models Port Sizes: 1/4, 3/8, 1/2, & 3/4



View shown (above) using padlock in closed position.

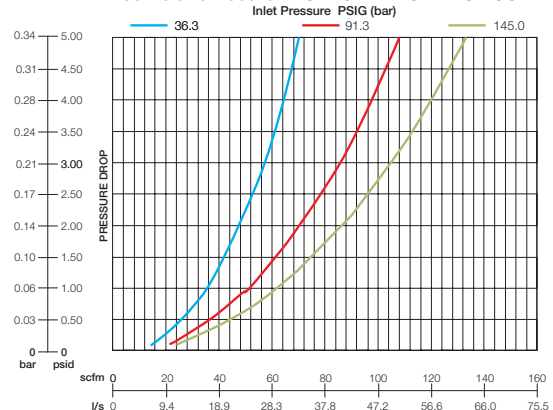
Model Shown: V383-4N6A0A
With DPB option

- ◆ High-Flow threaded Exhaust port to accommodate muffler or a line for remote exhausting.
- ◆ Compact modular (series 380 and CFR360 / 370) or inline.
- ◆ Optional slow start (delayed-pressure-buildup) function.
- ◆ 3 ported valve.
- ◆ 1/8" downstream pressure ports.
- ◆ Options available to indicate downstream pressure.
- ◆ NPTF port threads; optional BSPP threads.
- ◆ Carboxylated Buna O-Rings & Acetal Slide for low break away friction, even after a long standby period.
- ◆ **PUSH** to close, **PULL** to open (DPB-Pull to open as soft start, press button and continue to PULL for full flow).
- ◆ Preferred installation is downstream of F-R-L. **NOTE:** If installed up-stream of regulator, the regulator must be capable of Quick Exhaust (reverse flow).
- ◆ LOTO (lockout Tag out)

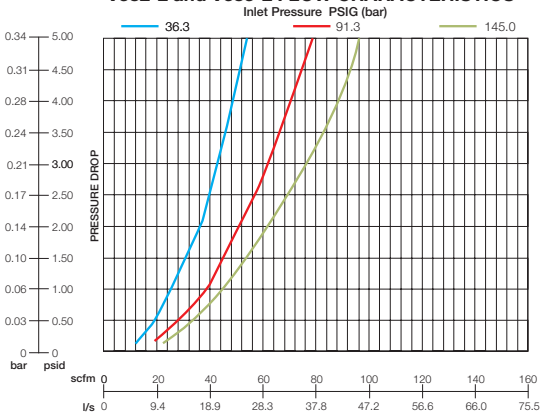
SPECIFICATIONS

Ambient/Media Temperature:
40° to 175°F (4° to 79°C).
Body: Zinc.
Color: Black body, red lockout slide
Fluid Media: Compressed air.
Inlet Pressure: 200 psig (13.8 bar) maximum.
Elastomers: Nitrile.
Ports: Tapped inlet, outlet and exhaust ports.
Slide: Acetal.
Maximum lock shank diameter: 0.260.

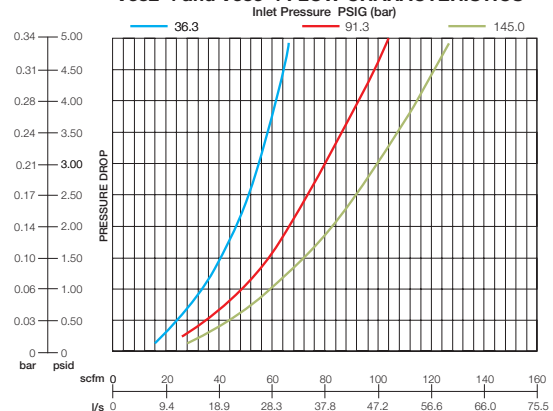
V382-3 and V383-3 FLOW CHARACTERISTICS



V382-2 and V383-2 FLOW CHARACTERISTICS



V382-4 and V383-4 FLOW CHARACTERISTICS



DIMENSIONS Inches (mm)

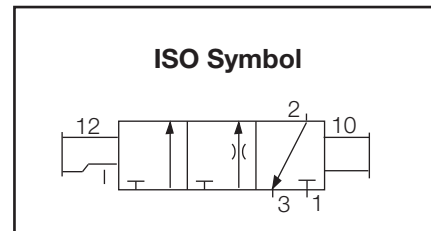
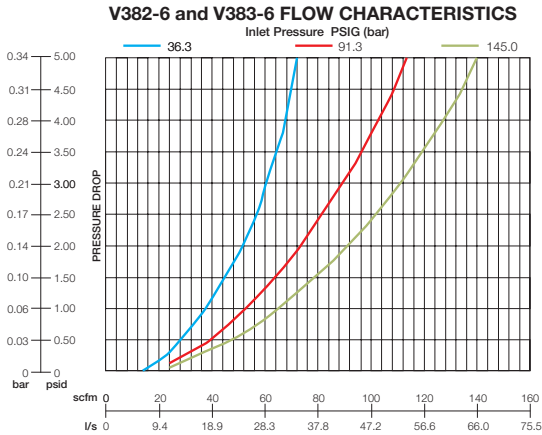
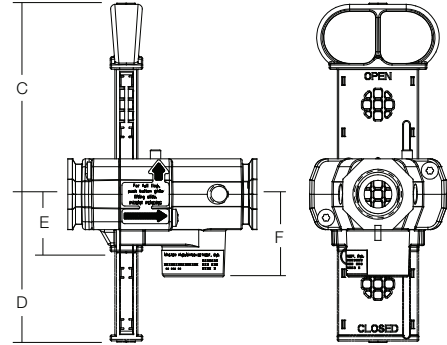
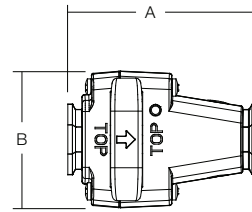
Port Sizes	A	B	C	D	E	F
All	4.01 (101.9)	2.90 (73.7)	4.05 (102.9)	3.14 (79.8)	1.24 (31.5)	1.75 (44.5)

Lockout slide hole diameter: 0.29.
 Lockout accepts maximum padlock shackle diameter: 0.26
 Maximum lockout hasp diameter: 0.26.

Flow at 5 PSID

	NFPA	36.3 SCFM	91.3 SCFM	145 SCFM
V382-2	CV = 3.7	53	78	96
V382-3	CV = 4.9	70	109	132
V382-4	CV = 4.9	67	103	128
V382-6	CV = 5.3	73	114	141

NOTE: These units can be padlocked in the closed position only.



ORDERING INFORMATION

Change the letters in the sample model number below to specify the lockout valve you want.

V38 3 - 3 N 6 A 1 A W

LOCKOUT TYPE

- Lockout (Push-Pull) 2
- Lockout with (0.050 Orifice) delayed- Pressure-Buildup function. 3

INLET / OUTLET PORT SIZE

- 1/4 NPTF 2
- 3/8 NPTF 3
- 1/2 NPTF 4
- 3/4 NPTF 6

EXHAUST PORTS

- 3/4 NPTF 6

PORT TYPE

- NPTF threads Leave blank
- BSPF threads W

MUFFLER TYPE

- None A
- Muffler (M200-6) B

GAUGE OPTIONS

- None 0
- 0-30 PSI 1
- 0-60 PSI 2
- 0-160 PSI 3
- Pressure sensor (118-122) 4