

VANGUARD Solenoid Pilot 3/2 Valves with Lockout Control

V460 Models Port Sizes: 1/4 to 2-1/2

Model Shown: V460-8N8



- ◆ 3-Way poppet valve. Available in four body sizes and nine port sizes.
- ◆ Solenoid pilot for remote control.
- ◆ Solenoids CSA approved.
- ◆ Large lockout handle is red so it will be easily seen in the workplace.
- ◆ Can be padlocked only in the closed position.
- ◆ Lockout spool moves smoothly even after long period on standby.
- ◆ Threaded exhaust port to accommodate a silencer or a line for remote exhausting.
- ◆ NPTF port threads; optional BSPP threads.

SPECIFICATIONS

Media Temperature:

40° to 175°F (4° to 80°C).

Ambient Temperature:

40° to 120°F (4° to 50°C).

Fluid Media: Compressed air.

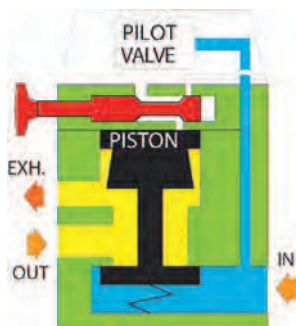
Inlet Pressure:

15 to 150 psig (1 to 10 bar) except largest body which is 30 to 150 psig (2 to 10 bar).

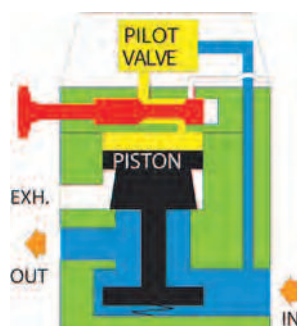
Solenoid Voltages: 110 volts 50/60 Hz standard.

Optional available voltages shown on following page.

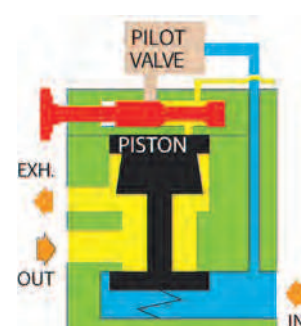
VALVE OPERATION



With solenoid pilot de-energized the inlet poppet is always closed. Downstream air pressure is exhausted via the exhaust port.



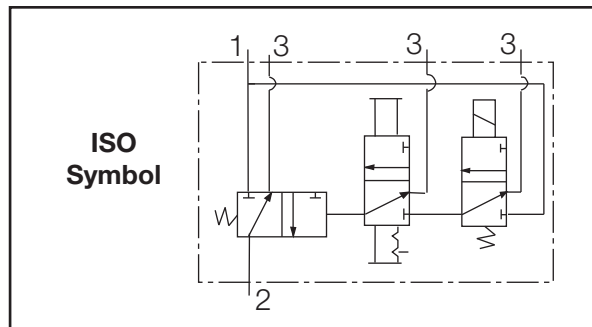
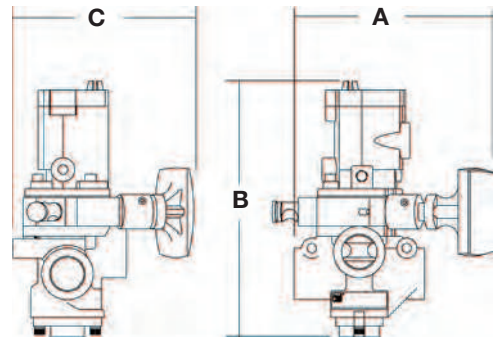
With solenoid pilot energized and the lockout handle pulled outward, pressure on the piston opens the inlet poppet and air flows freely from inlet to outlet. The exhaust port is closed.



With the lockout handle pushed inward air to the piston is cut off. The inlet poppet closes, and downstream air pressure is exhausted via the exhaust port.

DIMENSIONS inches (mm)

Port Sizes		Average C _v		A	B	C
In-Out	Exh	1 to 2	2 to 3			
1/4	1/2	2.5	3.1			
3/8	1/2	3.6	5.3	6.1 (153)	8.2 (208)	6.3 (160)
1/2	1/2	3.3	5.3			
1/2	1	6.3	9.2			
3/4	1	7.7	11	6.6 (167)	8.9 (227)	6.3 (160)
1	1	8.0	12			
1	1-1/2	23	34			
1-1/4	1-1/2	30	32	7.6 (193)	11.5 (291)	6.6 (166)
1-1/2	1-1/2	30	31			
1-1/2	2-1/2	68	70			
2	2-1/2	70	70	8.8 (222)	13.4(339)	7.1 (180)
2-1/2	2-1/2	70	71			



ORDERING INFORMATION

Select the port sizes in the sample model number below to specify the valve you want.

V460 - A - 2 N4 W

VOLTAGE REQUIREMENT

- 110/50Hz, 110-120/60Hz (AC)..... Leave Blank
- 12/50-60Hz (AC) A
- 24/50-60Hz (AC) B
- 48/50-60Hz (AC) C
- 220/50, 220-240/60Hz (AC) D
- 12v (DC) E
- 24v (DC) F
- 48v (DC) G
- 120v (DC) H

INLET/OUTLET PORTS

- 1/4 NPTF.....2
- 3/8 NPTF.....3
- 1/2 NPTF.....4
- 3/4 NPTF.....6
- 1 NPTF.....8
- 1-1/4 NPTF10
- 1-1/2 NPTF12
- 2 NPTF.....16
- 2-1/2 NPTF20

PORT TYPE

- NPTF threads Leave Blank
- BSPP threads W

EXHAUST PORT SIZE:

- 1/2" exhaust port.....N4
for 1/4, 3/8, 1/2 inlet / outlet ports
- 1" exhaust port.....N8
for 1/2, 3/4, 1 inlet / outlet ports
- 1-1/2" exhaust port N12
for 1, 1-1/4, 1-1/2 inlet / outlet ports
- 2-1/2" exhaust portN20
for 1-1/2, 2, 2-1/2 inlet / outlet ports