

JETMASTER INSTALLATION INSTRUCTIONS

DESCRIPTION AND OPERATION

The JETMASTER Dispenser consists of a mounting block, clamp assembly, and a nozzle manifold. Application of an air signal (45 psi/min.), cycles the injector, which delivers a preset amount of liquid into the air flowing through the nozzle manifold. The density of the jet of liquid can be controlled by varying the amount of air flowing out of the nozzle or the amount of liquid dispensed by the injector. Air flow is controlled by a needle valve in the nozzle assembly. The JETMASTER Dispenser can function with most liquids having a viscosity less than 2000 SSU at 100°F.

INSTALLATION AND START-UP

1. Mount the dispenser with nozzles extending horizontally. Nozzle tubes may be bent in any attitude to provide liquid at point of need.
2. Connect a clean filtered liquid supply to the 1/4-18 NPTF port in the top clamp. NOTE: To insure automatic air venting of the liquid supply, connect liquid supply to bottom port of mounting block and install a 3/8 O.D. stand pipe in the clamp. The stand pipe should extend above the reservoir.
3. Connect an air signal line to either the 1/8-27 NPTF port in the bottom of the mounting block, or in the clamp from the normally closed port of an air control valve.
4. Push the manual override button until the liquid is dispensed at the end of the nozzle.
5. Set air adjustment on nozzle manifold and liquid feed on injector to give desired spray pattern.

ORDERING CODE

"P" IS USED TO DEFINE THE INDIVIDUAL SERVO-METER. THE PREFIX IS DROPPED WHEN THE PRODUCT IS USED IN THE NEXT LEVEL ASSEMBLY.

TYPE OF ASSEMBLY

"75" = LIQUID INJECTOR WITH MANIFOLD
"76" = LIQUID INJECTOR HEAVY DUTY MOUNT WITH MANIFOLD.

STANDARD OPTIONS ON JETMASTERS

- VITON SEALS
- 12" NOZZLE
- SOLID ENDCAP

ORDERING CODE

P700000000B-XXXX

SUFFIXES

- "A" = SHUTOFF
- "E" = EPR SEALS
- "H" = NOZZLE FOR INJECTOR STANDARD LENGTH 12"
- "H**" = NOZZLE FOR INJECTOR NOZZLE LENGTH (**)
- "J" = BSPT THREADS
- "N" = NEOPRENE SEALS
- "P" = NON-ADJUSTMENT
- "S" = SOLID END CAP
- "T" = TEFLON SEALS
- "V" = VITON SEALS
- "W" = BSPP THREADS

SUFFIXES WILL FOLLOW IN ALPHABETICAL ORDER

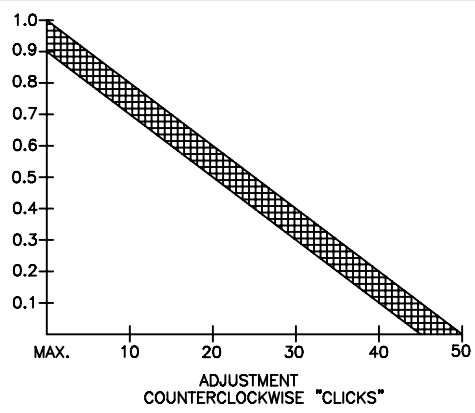
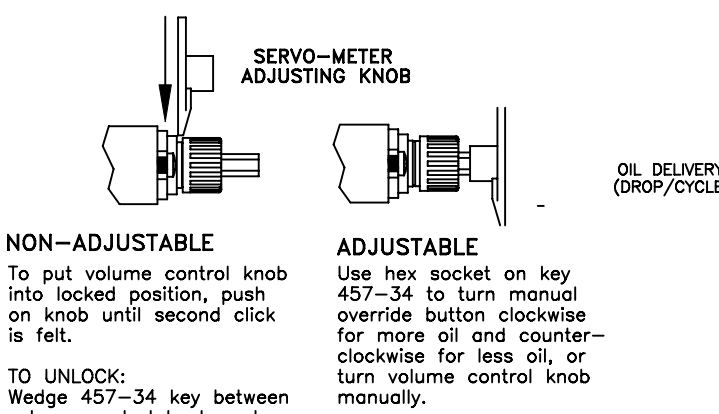
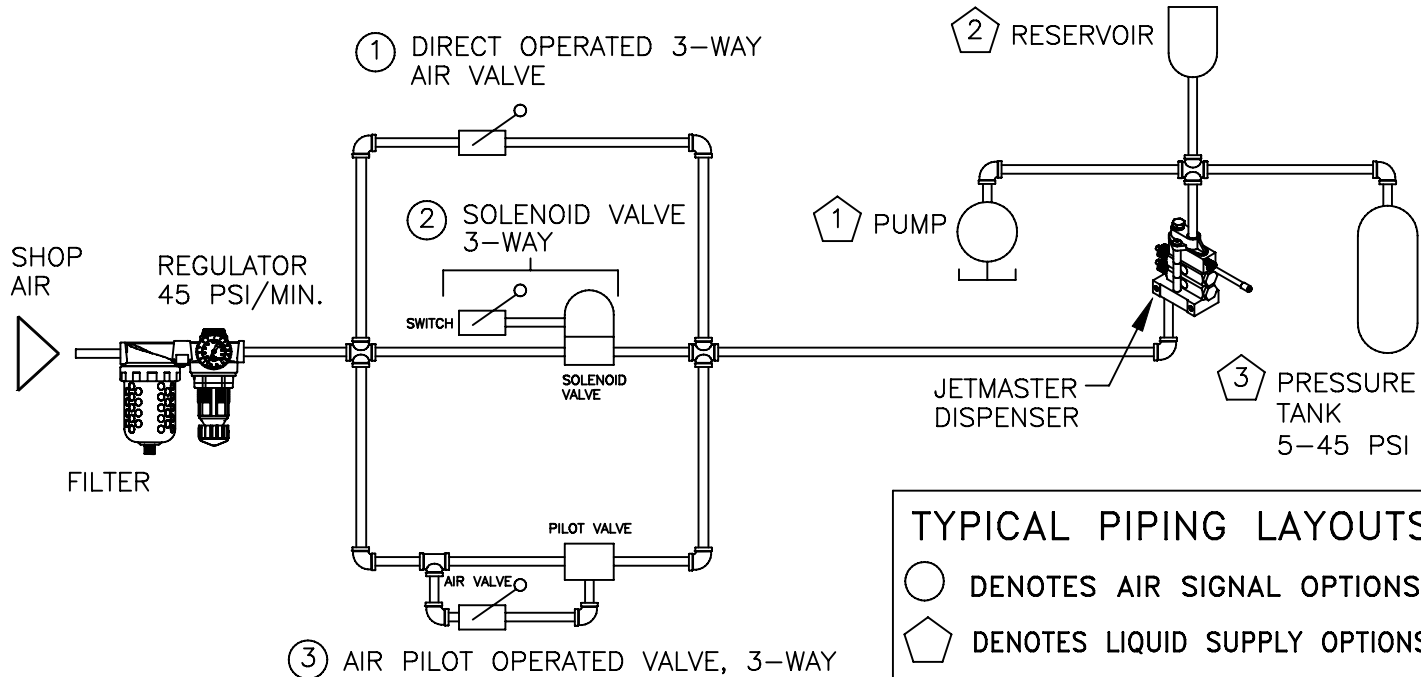
MPL QUANTITIES

"01" = 1 INJECTOR
"02" = 2 INJECTOR ETC.

"05" = 1/2 DROP
"10" = 1 DROP
"20" = 2 DROP

NUMBER OF HOLES IN HOUSING

"5" = FOR MULTIPLE JET ASS'Y
"A" = FOR MULTIPLE DROP ASS'Y



SPECIFICATIONS:

OPERATING PRESSURE: 45-150 PSI.

LIQUID SUPPLY: 0 TO 45 PSI (0 TO 3.06 BAR)

LIQUID VISCOSITY: 130 TO 2000 SSU (70 TO 1700 REDWOOD).

JET MASTER SERVICE PARTS LIST

TYPICAL CONFIGURATIONS

MULTIPLE JET ASSEMBLY

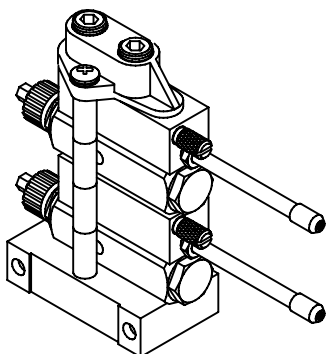
MULTIPLE DROP ASSEMBLY

BASIC MOUNT

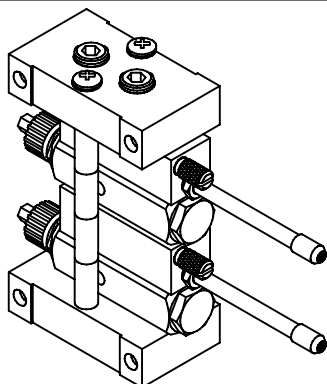
HEAVY DUTY MOUNT

BASIC MOUNT

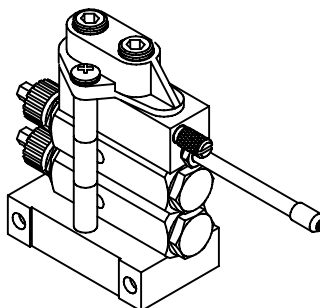
HEAVY DUTY MOUNT



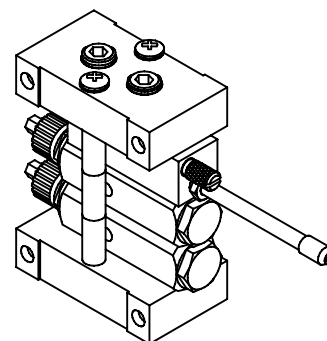
MODEL NO. 750†*5B-HSV



MODEL NO. 760†*5B-HSV



MODEL NO. 750†*AB-HSV

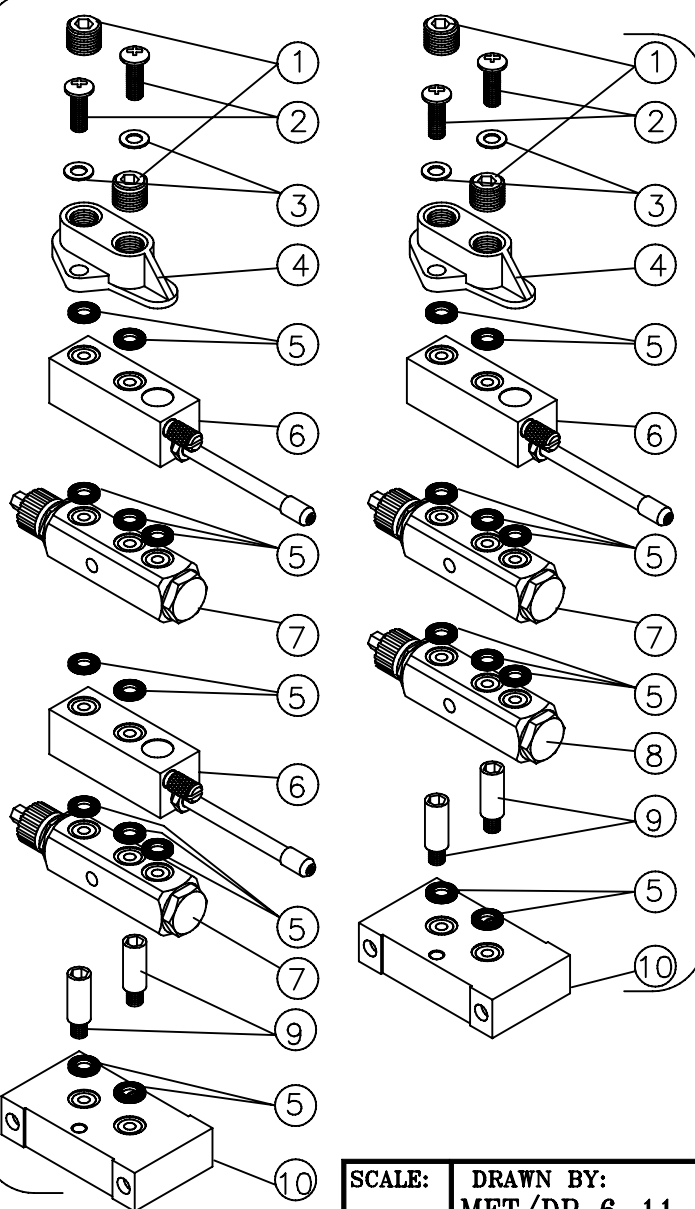


MODEL NO. 760†*AB-HSV

†-INDICATES NUMBER OF INJECTORS IN ASSEMBLY. ASSEMBLIES WITH MORE THAN TEN INJECTORS ARE NOT RECOMMENDED.
*-INDICATES THE TYPE OF INJECTOR (05 FOR 1/2 DROP, 10 FOR 1 DROP, 20 FOR 2 DROP).

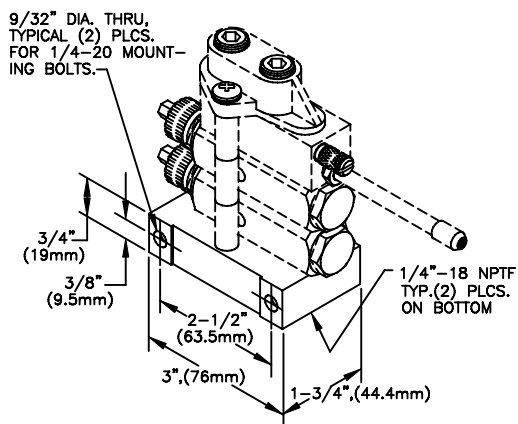
760†*5B-HSV	760†*AB-HSV	750†*5B-HSV	750†*AB-HSV	†	*	†	*	†	*	†	*	†	*	†	*
2	2	—	—	12	474-17	SCREW (NOT SHOWN)									
1	1	—	—	11	474-16M	MOUNTING BLOCK (NOT SHOWN)									
1	1	1	1	10	474-10M	MOUNTING BLOCK									
2	2	2	2	9	474-09	MOUNTING BOLT									
†	†	†	†	8	P70001*5B-HSV	5 HOLE ADJ. INJECTOR									
—	1-†	—	1-†	7	P70001*6B-HSV	6 HOLE ADJ. INJECTOR									
†	1	†	1	6	474-22	NOZZLE MANIFOLD									
2+5†	4+3†	2+5†	4+3†	5	474-04V	SEALING WASHER									
—	—	1	1	4	474-13M	CLAMP									
2	2	2	2	3	10031	LOCKWASHER									
—	—	2	2	2	474-54	SCREW									
2	2	2	2	1	01986M	PLUG (1/4" NPTF)									
QUANTITY		KEY		PART NUMBER		DESCRIPTION									

†-INDICATES NUMBER OF INJECTORS IN ASSEMBLY. ASSEMBLIES WITH MORE THAN TEN INJECTORS ARE NOT RECOMMENDED.
*-INDICATES THE TYPE OF INJECTOR (05 FOR 1/2 DROP, 10 FOR 1 DROP, 20 FOR 2 DROP).



BASIC MULTIPLE JET ASSEMBLY (EXPLODED)

BASIC MULTIPLE DROP ASSEMBLY (EXPLODED)



MOUNTING BLOCK HOLE LOCATION