



# BF6A400 & BF400 Installation and Maintenance

**MASTER PNEUMATIC - DETROIT, INC.**

6701 -18 Mile Rd. | Sterling Heights, MI 48314 | Phone: (586) 254-1000 | Fax: (586) 254-6055 | Email: mp@masterpneumatic.com

## PRODUCT NUMBERS:

BF6A400-10E\*  
BF6A400-12E\*  
BF6A400-16E\*  
BF400-10E\*  
BF400-12E\*  
BF400-16E\*

## THANK YOU!

You have just purchased a quality Filter from Master Pneumatic.

With care in its installation and maintenance, you can expect it to have a long and economical service life. Before you go any further, please take a few minutes to look over this information, then save it for future reference and for the useful service information it contains.

## Installation & Operation Procedures

**NOTE:** Read Warning Stuffer STU-A019 included in box with product before proceeding.

### INSTALLATION:

1. Depressurize and lockout air pressure.
2. Upstream pipes must be free of excessive dirt and liquids.
3. Install the Filter as near as possible to the device it is to serve.
4. Install the Filter so that air flows from inlet to outlet as shown on the head.
5. The Filter must be installed vertically with drain mechanism at the bottom.
6. Filters should be installed upstream of any Regulators or Lubricators in the airline.

### OPERATION:

1. Float Drain Filter may be drained manually by turning Drain Stem clockwise until bowl drains. Return to full counter-clockwise position for automatic drain position. To install 3/16 flexible tubing, push tubing on the Stem. A tube clamp should be used to retain tubing on drain stem.
2. Manual Filter is drained by turning Draincock Knob clockwise.
3. Replace Element when dirty. If pressure differential reaches 8 psid, element MUST be replaced.

### TO CLEAN OR REPAIR:

1. Depressurize and lockout air pressure.
2. Remove Bowl Assembly by turning counter-clockwise.
3. Hold the filter element and remove Lower Baffle by turning Wing Nut counter-clockwise. Then remove Lower Baffle and Filter Element. Do NOT clean elements, they must be replaced.
4. To replace the Filter Element make sure the Filter Element is oriented with the Arrow toward the Filter Head as shown in the Dimensional Specification Section on page 3. Place the seals and the Upper Baffle as shown in the Section View on page 2.
5. Place the Filter Element with the Seals and Baffle in the head. Slide the Lower Baffle with a new seal on the Stud. Tighten the Wing Nut finger tight.
6. To service Float Drain, remove the Drain Nut by turning counter-clockwise. The Float Drain can now be removed from Bowl.
7. The Float Drain and Bowl can now be cleaned. (*For instructions to repair Float Drain see STU-A028.*)
8. When re-assembling, be sure all seals and o-rings are correctly located. Lubricate o-rings with Lithium grease. Torque Drain Nut 35-45 in-lbs. Torque Bowl to Head 90 to 110 Ft-Lb.
9. If the Filter cannot be repaired by cleaning with soap and water, the parts should be replaced.

## Replacement Parts

DESCRIPTION	PART NUMBER
Float Drain Metal Bowl Assembly	ABF6A106-48M
Manual Metal Bowl Assembly	ABF106-48M
Seal Kit— Upper & Lower Baffle, Gas-kets, Bowl O-ring, and Wing Nut	A106-19P
Float Drain Kit	A802-49
Manual Draincock	103-51SP

DESCRIPTION	PART NUMBER
Element Kit - 40µm (Std Element)	K106-33
Element Kit - 5µm	K106-33E5



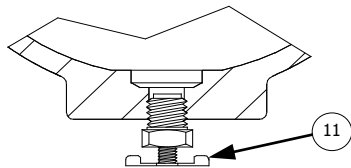
# BF6A400 & BF400 Installation and Maintenance

**MASTER PNEUMATIC - DETROIT, INC.**

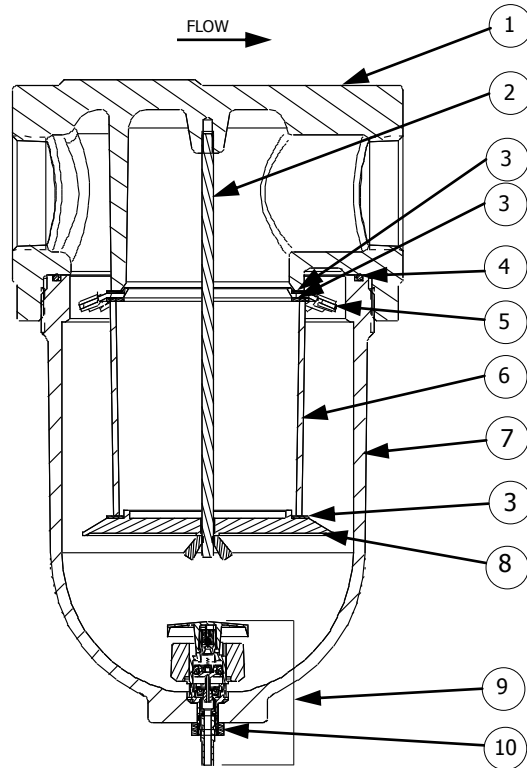
6701 -18 Mile Rd. | Sterling Heights, MI 48314 | Phone: (586) 254-1000 | Fax: (586) 254-6055 | Email: mp@masterpneumatic.com

## Parts Listing

KEY	DESCRIPTION
1	Head
2	Stud
3	Baffle Seals
4	O-Ring
5	Head Baffle
6	Filter Element
7	Metal Bowl
8	Lower Baffle
9	Float Drain Assembly
10	Drain Nut
11	Draincock

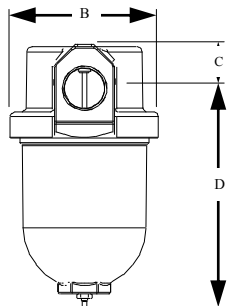
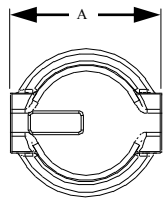


BF400 SECTION VIEW



BF6A400 SECTION VIEW

## Dimensional Specifications



When replacing Element make sure the arrow (stamped on the element) is facing as shown.

KEY	BF6A400-10,12,16	BF400-10,12,16
A	8.06" [204,7 mm]	8.06" [204,7 mm]
B	8.0" [203,2 mm]	8.0" [203,2 mm]
C	2.38" [60,3 mm]	2.38" [60,3 mm]
D	12.0" [304,9 mm]	12.0" [304,9 mm]