

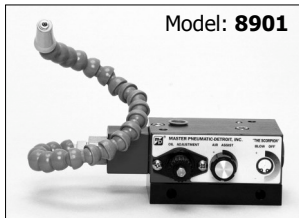


® 89 The Scorpion JR Repair and Maintenance Stuffer

MASTER PNEUMATIC - DETROIT, INC.

6701 -18 Mile Rd. | Sterling Heights, MI 48314 | Phone: (586) 254-1000 | Fax: (586) 254-6055 | Email: mp@masterpneumatic.com

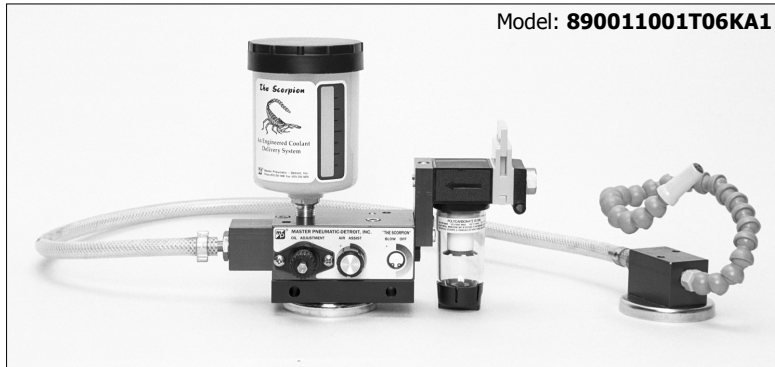
JM 11-09-01
MJF REV: 04-17-13
(ECN 4871)



Model: **8901**



Model: **890011001A00KA1**



Model: **890011001T06KA1**



Model: **890011000A00KA1**

THANK YOU!

You have just purchased a premium quality precision liquid delivery system from Master Pneumatic.

With care in its installation and maintenance, you can expect it to have a long and economical service life. Before you go any further, please take a few minutes to look over this information, then save it for future reference and for the useful service information it contains.

Installation Instructions

Mounting to Machine

1. Locate a place on your machine to mount The Scorpion Jr. so that the nozzle will reach the workpiece, the controls are within reach, and the reservoir can be filled without obstruction.
2. Place Scorpion Jr. on your chosen mounting location and mark (2) 9/32 holes (for 1/4" mounting screws) which are located on the lower, black mounting base.
3. Drill hole for 1/4 inch screw in center of each mark.
4. Mount unit to machine using two 1/4 inch (M6) screws.

Optionally, use magnetic base for easy mounting changes.

Installing the Reservoir

1. Using a pipe thread sealant, apply sparingly to 1/4 inch male pipe thread located at bottom of the reservoir, making sure to keep compound off of leading thread.
2. Remove plug from 1/4 inch female pipe thread located on top of the Scorpion Jr.
3. Screw reservoir into hole just enough to engage threads.
4. **CAUTION: Do not attempt to tighten by hand!** Using the reservoir bowl or cover to tighten may damage the reservoir.
5. Finish tightening reservoir with 3/4 inch wrench **only on hex at bottom of reservoir**, so label is in front and operator can see the reservoir fluid level. **Do not over-tighten.**

Air Supply

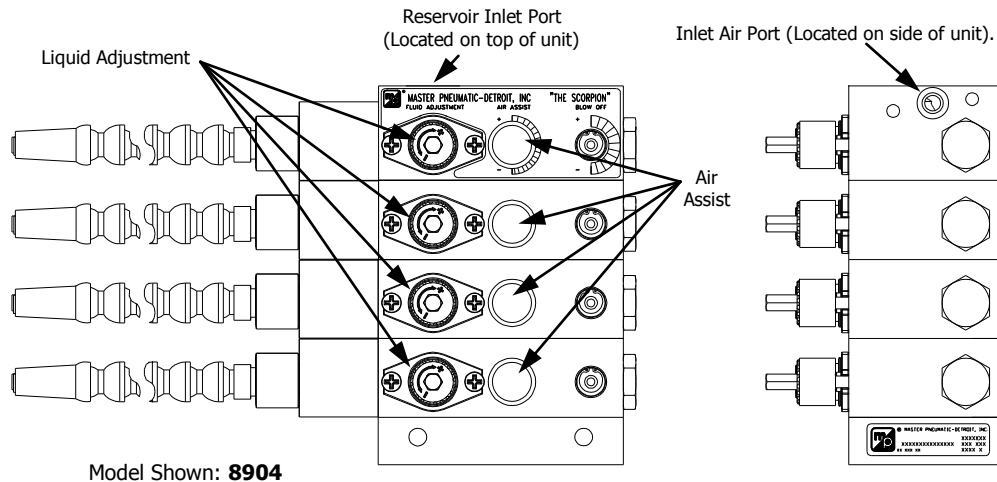
1. Locate the inlet air port on side of unit.
 2. Connect your on/off air supply (signal) to inlet air port. Minimum 60 psi required.
- NOTE: Units with multiple nozzles may require larger air volume.



89 The Scorpion JR Repair and Maintenance Stuffer

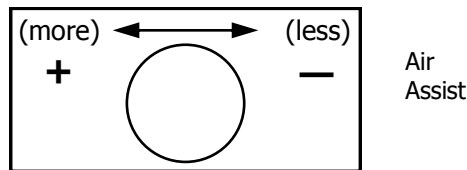
MASTER PNEUMATIC - DETROIT, INC.

JM 11-09-01
MJF REV: 04-17-13
(ECN 4871)



Startup Procedure

1. Attach reservoir connection to reservoir inlet port. Fill the reservoir with required liquid.
2. Locate the liquid adjustment knob on the front of the unit. The Scorpion Jr. is shipped **unlocked** from the factory.
3. For initial start-up, the liquid volume should be adjusted to maximum. To achieve this, turn the knob clockwise until it stops – **do not over torque knob**. Use the adjusting key to turn counter-clockwise 3-5 clicks.
4. Activate The Scorpion Jr., Cycle until liquid sprays consistently. The Scorpion Jr. is now primed and ready to operate.
5. Adjust air assist: Counter-clockwise for more air, clockwise for less.



6. Set the desired amount of liquid to be delivered on each pulse by turning the liquid adjustment control knob clockwise for more liquid, counter-clockwise for less.
7. When the desired amount of liquid is achieved, push the liquid adjustment control knob **in** to lock in place.
8. Direct the nozzle so that the liquid will be applied to the desired area.

The Scorpion Jr is now ready to use.
*Amount of coolant and air-assist pressure may vary depending on the
air inlet pressure and length of cycle time.*



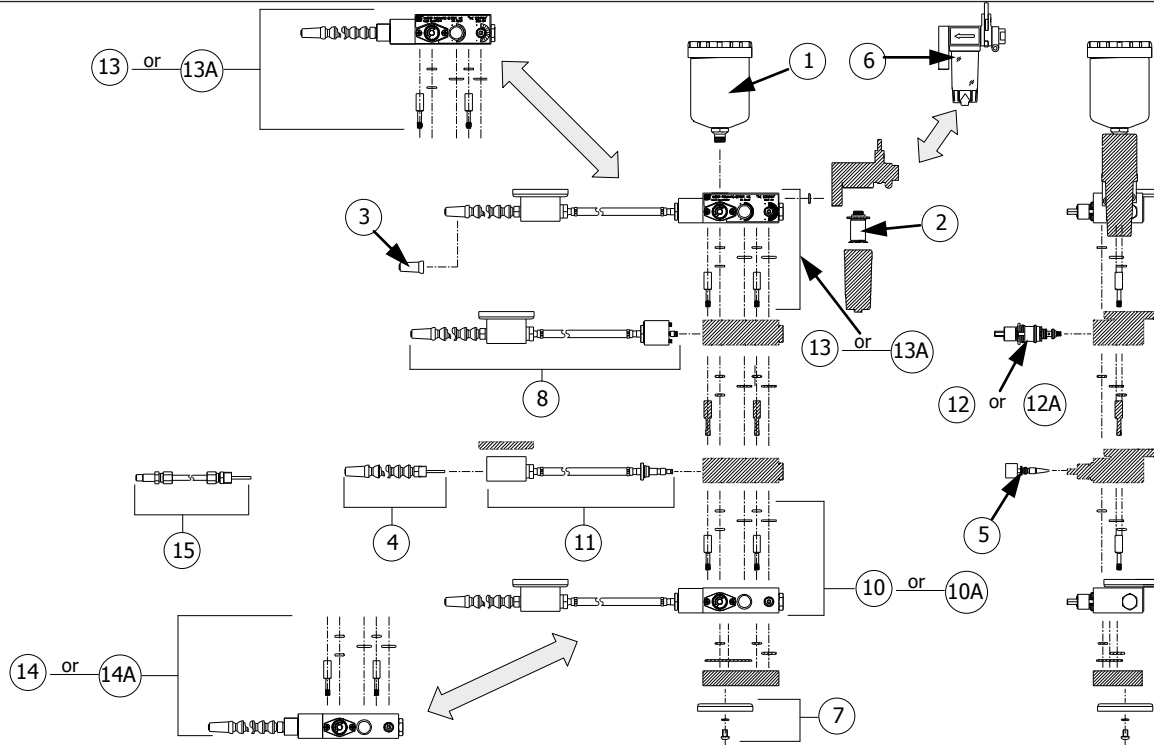
89 The Scorpion JR Repair and Maintenance Stuffer

MASTER PNEUMATIC - DETROIT, INC.

6701 -18 Mile Rd. | Sterling Heights, MI 48314 | Phone: (586) 254-1000 | Fax: (586) 254-6055 | Email: mp@masterpneumatic.com

JM 11-09-01
MJF REV: 04-17-13
(ECN 4871)

Repair Kits / Replacement Parts



KEY	DESCRIPTION	8901	8902	8903	8904	Optional Accessories
1	RESERVOIR (Integral 10 oz)	NONE	NONE	NONE	NONE	M476RP
2	FILTER ELEMENT REPLACEMENT KIT	NONE	NONE	NONE	NONE	KA130-27PE5
3	NOZZLE END CAP ASSEMBLY	A556-133	A556-133	A556-133	A556-133	
4	SEGMENTED (SNAPLOCK) NOZZLE ASSY	A556-134-*	A556-134-*	A556-134-*	A556-134-*	
5	FLOW CONTROL NEEDLE ASSEMBLY	A556-127	A556-127	A556-127	A556-127	
6	FILTER ASSEMBLY KIT	NONE	NONE	NONE	NONE	A556-118F-#
7	MAGNETIC BASE ASSEMBLY	NONE	NONE	NONE	NONE	A556-115
8	NOZZLE & HOSE ASSY with MAGNETIC BASE	NONE	NONE	NONE	NONE	A556-113-#N@
9	TOP PLATE MANIFOLD ASSY KIT—1 DROP	NONE	NONE	NONE	NONE	A556-125-#N@
9A	TOP PLATE MANIFOLD ASSY KIT - 2 DROP	NONE	NONE	NONE	NONE	A556-125B-#N@
10	MID PLATE MANIFOLD ASSY KIT—1 DROP	NONE	NONE	NONE	NONE	A556-129-#N@
10A	MID PLATE MANIFOLD ASSY KIT - 2 DROP	NONE	NONE	NONE	NONE	A556-129B-#N@
11	HOSE ASSEMBLY with STANDARD BASE	NONE	NONE	NONE	NONE	A556-119-@
12	ADJUSTMENT ASSEMBLY KIT—1 DROP	A556-11M-1	A556-11M-1	A556-11M-1	A556-11M-1	
12A	ADJUSTMENT ASSEMBLY KIT—2 DROP	A556-11M-2	A556-11M-2	A556-11M-2	A556-11M-2	
13	TOP PLATE MANIFOLD ASSY KIT—1 DROP	A556-125-#N@	A556-125-#N@	A556-125-#N@	A556-125-#N@	
13A	TOP PLATE MANIFOLD ASSY KIT - 2 DROP	A556-125B-#N@	A556-125B-#N@	A556-125B-#N@	A556-125B-#N@	
14	MID PLATE MANIFOLD ASSY KIT—1DROP	NONE	A556-129-#N@	A556-129-#N@	A556-129-#N@	
14A	MID PLATE MANIFOLD ASSY KIT - 2 DROP	NONE	A556-129B-#N@	A556-129B-#N@	A556-129B-#N@	
15	COPPER NOZZLE ASSEMBLY	A556-134-C*	A556-134-C*	A556-134-C*	A556-134-C*	

*= Nozzle length in 1" (2.54 cm) increments @= Hose length in 1 foot (30.43 cm) increments #= 1 for 1/8 NPTF, 2 for 1/4 NPTF, 1W for 1/8 BSPP, 2W for 1/4 BSPP



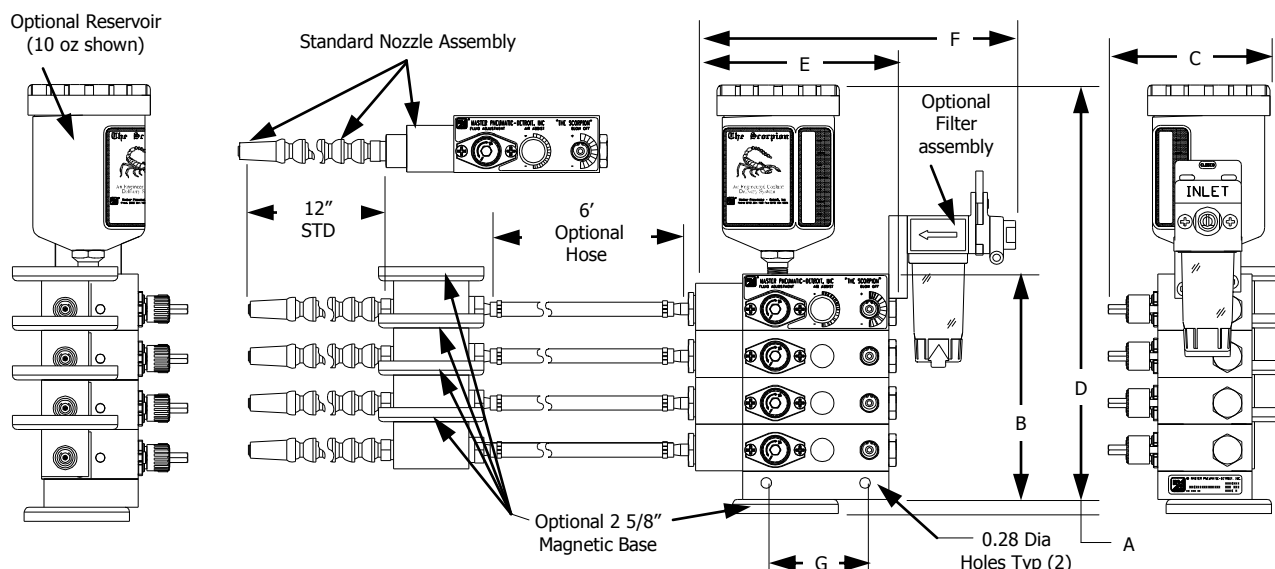
89 The Scorpion JR Repair and Maintenance Stuffer

MASTER PNEUMATIC - DETROIT, INC.

6701 -18 Mile Rd. | Sterling Heights, MI 48314 | Phone: (586) 254-1000 | Fax: (586) 254-6055 | Email: mp@masterpneumatic.com

JM 11-09-01
MJF REV: 04-17-13
(ECN 4871)

Dimensional Specifications



KEY	DIMENSION	Add Per Additional Nozzle Assembly
A	9/32 (0.72 cm)	1 1/4 (3.18 cm)
B	2 1/4 (5.72 cm) (First Injector)	
C	4 5/16 (10.95 cm)	

KEY	DIMENSION	Add Per Additional Nozzle Assembly
D	6 29/32 (17.54 cm) (First Injector)	1 1/4 (3.18 cm)
E	5 1/4 (13.33 cm)	
F	8 5/32 (20.72 cm)	
G	3 1/4 (8.26 cm)	

General Specifications

Inlet Pressure: 60 - 120 psig. (4.1 - 8.3 Bar)

Operating Temperature: 40° to 125° F. (4.4° to 51.7° C)

Seals: Air seals are nitrile. Oil seals are Viton.

Injector coolant output per pulse: Standard 1 drop - 0.030 ml
(Adjustable) Optional 2 drop - 0.060 ml

Coolant Reservoir Options: Integral, plastic 10-ounce (300 ml) capacity. Standard with no reservoir.

Nozzle Assembly Options: 12-inch flexible segmented plastic (Snaplock) with conical tip standard. Also, 18-inch, 24-inch and 36-inch lengths available with conical or fan tip. Optional Copper nozzles available in same lengths with conical or fan tip.

Hose Options: 6-ft. length braided PVC standard. Order longer or shorter hose in 1-ft (30.43 cm) increments.

Filter Assembly Options: Sentry filter assembled with lockout valve. Standard without filter.

Inlet Port Options: Standard with no filter are 1/8 NPTF ports. Also available with no filter are: 1/8 BSPP and 1/4 BSPP. Available ports when ordering filter option are: 1/8 NPTF, 1/8 BSPP, 1/4 NPTF, and 1/4 BSPP.

SEVEN YEAR WARRANTY

Master Pneumatic warrants to the Purchaser that the equipment to be delivered will be free from defects in material and workmanship for seven years. This warranty does not cover normal service parts (such as filter elements) or parts that fail due to chemical attack, abuse, improper service, or improper use. The foregoing warranty is exclusive and in lieu of all other warranties whether written, oral, expressed or implied. There is NO WARRANTY OF MERCHANTABILITY OR FITNESS OF PURPOSE. If it appears within seven years from the date of shipment by the Company that the equipment has not met the warranties specified above and the Purchaser notifies the Company promptly, the Company shall correct any defect, at it's option, either by repairing any defective part or parts or by making available at the Company's plant a repaired or replacement part.

Except as otherwise specified by the manufacturer, these products specifically designed for compressed air service. Use with any other fluid must be approved by Master Pneumatic-Detroit, Inc.

In no event will Master Pneumatic-Detroit, Inc. be liable for business interruptions, loss of profits, harm, injury, damage, personal injury, cost of delay, or any other special, indirect, incidental, or consequential losses, costs, or damage.