



L50 Service Parts and Maintenance

MASTER PNEUMATIC - DETROIT, INC.

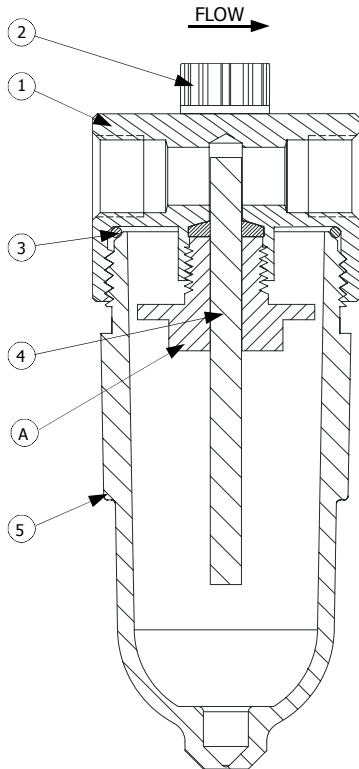
6701 -18 Mile Rd. | Sterling Heights, MI 48314 | Phone: (586) 254-1000 | Fax: (586) 254-6055 | Email: mp@masterpneumatic.com

Replacement Parts & Kits

THANK YOU!

You have just purchased a quality Lubricator from Master Pneumatic.

With care in it's installation and maintenance, you can expect it to have a long and economical service life. Before you go any further, please take a few minutes to look over this information, then save it for future reference and for the useful service information it contains.



| KEY | DESCRIPTION | L50-1 | L50-2 | L50-1W | L50-2W |
|-----|----------------|------------|------------|-------------|-------------|
| 1 | Head | 203-15-1/8 | 203-15-1/4 | 203-15-1/8W | 203-15-1/4W |
| 2 | Fill Plug Assy | A60L-17 | A60L-17 | A60L-17 | A60L-17 |
| 3 | O-ring | 406-23 | 406-23 | 406-23 | 406-23 |
| 4 | Wick | M203-3PC | M203-3PC | M203-3PC | M203-3PC |
| 5 | Plastic Bowl | 130-16LDC | 130-16LDC | 130-16LDC | 130-16LDC |

| KEY | DESCRIPTION | L50-Y-1 | L50-Y-2 | L50-Y-1W | L50-Y-2W |
|-----|----------------|-------------|-------------|--------------|--------------|
| 1 | Head | 203-15Y-1/8 | 203-15Y-1/4 | 203-15Y-1/8W | 203-15Y-1/4W |
| 2 | Fill Plug Assy | A60L-17 | A60L-17 | A60L-17 | A60L-17 |
| 3 | O-ring | 406-23 | 406-23 | 406-23 | 406-23 |
| 4 | Wick | M203-3PC | M203-3PC | M203-3PC | M203-3PC |
| 5 | Plastic Bowl | 130-16LDC | 130-16LDC | 130-16LDC | 130-16LDC |

| KIT NUMBER | DESCRIPTION |
|------------|--|
| K50-01 | Top Mounting Bracket Kit For 'T' suffix models |

Installation Procedures

INSTALLATION:

Depressurize and lockout air pressure. Install the lubricator as near as possible to the device it is to serve, following the arrow direction on lubricator head for airflow. To insure clean supply of air, install a filter immediately ahead of the lubricator. To insure a prompt feeding of lubricant, install the lubricator parallel to the device being lubricated. The hose or piping should be pre-oiled at installation. Multiple lubrication points from a single lubricator is not recommended.

ADJUSTMENTS:

Wick adjustment is not normally required, factory settings will be satisfactory for most applications. The amount of wick exposed and air flow determine amount of oil delivery. To increase oil delivery, loosen packing nut (A) by turning counterclockwise and raise wick (#4). To decrease oil delivery, lower the wick (#4).

MAINTENANCE:

To clean or repair the unit, depressurize and lockout air pressure. Remove bowl by turning counterclockwise. Sintered bronze wicks should give long, trouble free service. They can be cleaned by soaking several hours in a suitable solvent, then blowing them out with compressed air or steam. Replacement is recommended.

Do not fill under pressure. Depressurize and lockout air pressure. To fill reservoir bowl, remove fill plug (#2). Use light spindle oil 80 – 120 SSU at 100 F. Do not use compound oils containing graphite's, soap fillers, etc.



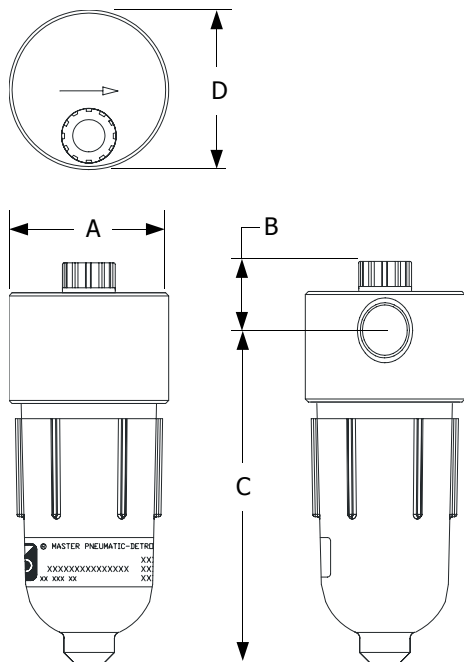
L50 Service Parts and Maintenance

MASTER PNEUMATIC - DETROIT, INC.

6701 -18 Mile Rd. | Sterling Heights, MI 48314 | Phone: (586) 254-1000 | Fax: (586) 254-6055 | Email: mp@masterpneumatic.com

JAA 9-19-05
(ECN 4055)
OLD: A754

Dimensional Specifications



| KEY | L50-1 L50-1W | L50-2 L50-2W |
|-----|------------------|------------------|
| A | 1 5/8 (41 mm) | 1 5/8 (41 mm) |
| B | 11/16 (17 mm) | 11/16 (27 mm) |
| C | 3 5/8 (92 mm) | 3 5/8 (92 mm) |
| D | 1 5/8 (41 mm) | 1 5/8 (41 mm) |

| KEY | L50-Y-1 L50-Y-1W | L50-Y-2 L50-Y-2W |
|-----|---------------------|---------------------|
| A | 1 5/8 (41 mm) | 1 5/8 (41 mm) |
| B | 11/16 (27 mm) | 11/16 (27 mm) |
| C | 3 5/8 (92 mm) | 3 5/8 (92 mm) |
| D | 1 5/8 (41 mm) | 1 5/8 (41 mm) |

General Specifications

WORKING PRESSURE MAX

PLASTIC BOWL

150 PSI @ 125°F
(10.3 BAR@ 51.7°C)

METAL BOWL

200 PSI @ 150°F
(13.8 BAR@ 65.6°C)

PREFIX OPTION (REPLACES L50)

BL Metal Bowl, standard flow
BL50-Y Metal Bowl, low flow
L50-Y Plastic Bowl, low flow

SUFFIX OPTION

Q Quick-fill Q-cap
T Top Mounting Head
W BSP British (Whitworth) Threads