



FCD380 Service Parts and Maintenance

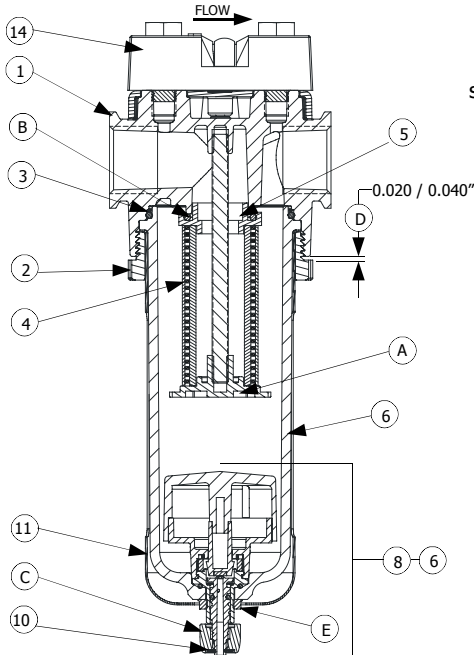
MASTER PNEUMATIC - DETROIT, INC.

6701 -18 Mile Rd. | Sterling Heights, MI 48314 | Phone: (586) 254-1000 | Fax: (586) 254-6055 | Email: mp@masterpneumatic.com

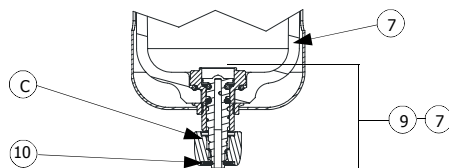
JM 1-22-03
REV 12-2-05
(ECN 4090)

Replacement Parts & Kits

FCD380 Section View (Automatic Drain)



FC380 Section View (Manual Drain)



THANK YOU!

You have just purchased a quality Coalescing Filter from Master Pneumatic.

With care in its installation and maintenance, you can expect it to have a long and economical service life. Before you go any further, please take a few minutes to look over this information, then save it for future reference and for the useful service information it contains.

KEY	DESCRIPTION	FCD380-3 FC380-3	FCD380-4 FC380-4	FCD380-6 FC380-6
1	Head	115-31-3	115-31-4	115-31-6
2	Bowl Ring	115-101	115-101	115-101
3	O-Ring, Bowl	115-112	115-112	115-112
4	Replacement Element (0.3 Micron)	A115-117	A115-117	A115-117
Not Shown	Replacement Element for extended bowl	A115-118	A115-118	A115-118
5	Element Top Cap	60F-21	60F-21	60F-21
6	AID Plastic Bowl Assembly kit	AFD115-109	AFD115-109	AFD115-109
7	Manual Plastic Bowl Assembly kit	AF115-109	AF115-109	AF115-109
8	Automatic Drain kit (no bowl assembly)	D380	D380	D380
9	Manual Drain Kit (no bowl assembly)	A802-32	A802-32	A802-32
10	Retaining Clip	802-30	802-30	802-30
11	Shatterguard	115-110	115-110	115-110
Not Shown	Manual Metal Bowl Assembly Kit	ABF115-100	ABF115-100	ABF115-100
Not Shown	AID Metal Bowl Assembly Kit	ABFD115-100	ABFD115-100	ABFD115-100
14	Differential Pressure Gauge	103-151	103-151	103-151

Installation Procedures

INSTALLATION:

Depressurize and lockout air pressure. Install the filter as near as possible to the device it is to serve, following the arrow direction on filter head for air flow. Coalescing filters should be installed upstream of any regulators, lubricators, or valve in the airlines. Installing downstream of a conventional M/P filter with standard 5 micrometer filter element will provide the maximum life of the coalescing element. Flexible tubing (3/16" I.D.) may be installed on the drain stem of the automatic internal drain to remove discharges. Remove retaining ring (#10) and pull off knob (C). Push tubing over drain stem.

ADJUSTMENTS:

Manual Drain: Turn knob (C) counter-clockwise to manually drain filter.

Automatic Internal Drain: The drain may be adjusted to compensate for differing operating conditions by adjusting the knob (C). For low flow or low pressure drop, turn the knob until the drain just closes. For high flows or high-pressure drop, turn the knob (C) clockwise if reduced drain action is required. Turning the knob clockwise to the stop puts the drain in a manual shutoff position. Turning the knob (C) counter-clockwise will manually drain the filter.

MAINTENANCE:

To clean or repair unit, depressurize and lockout air pressure. Replace the cartridge when the pressure differential across the element reaches 8 to 10 psid (0.55 to 0.69 bar). Remove bowl assembly by rotating bowl ring (#2) counter-clockwise. Remove the element (#4) after removing the bottom cap (A). Replace the element and reassemble the cartridge, making sure the O-ring (B) is seated when reinstalled. Torque lower baffle maximum of 10 in-lbs. Do not clean elements, they must be replaced. For manual drain models, periodically drain to discharge accumulated liquids. To service automatic internal drain: Remove bowl ring (#2) by turning counter-clockwise. Remove bowl assembly. Remove retaining ring (#10) and pull off knob (C). Remove retaining nut (E). The drain can then be removed, disassembled, and cleaned with soap and water. Torque drain nut (E) 5-15 in-lbs. Torque Bowl Ring (#2) 30-50 in-lbs. When Bowl ring is fully in place, there should be a gap between the retaining ring and head 0.020 - 0.040". See (D).

Plastic bowls may be cleaned with soap and water. Replace plastic bowls with metal if any signs of crazing or cracks are observed.

Note: When installing two M/P products using the A115-105 connecting clamp or A118-05M Clamp and bracket, torque screws 30-40 in-lbs.



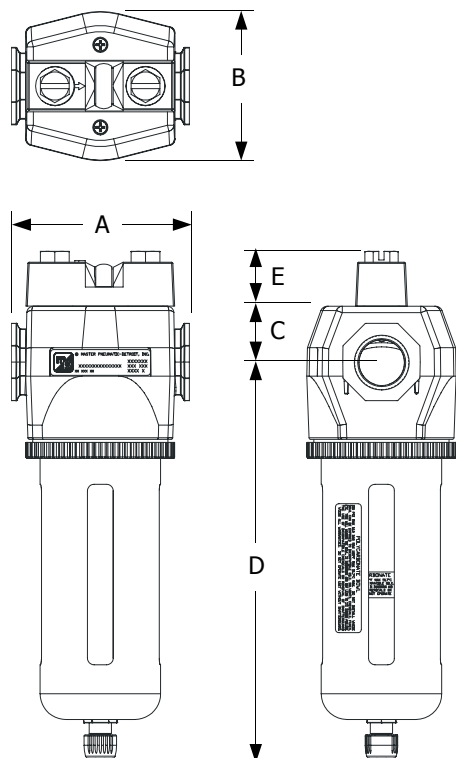
FCD380 Service Parts and Maintenance

MASTER PNEUMATIC - DETROIT, INC.

6701 -18 Mile Rd. | Sterling Heights, MI 48314 | Phone: (586) 254-1000 | Fax: (586) 254-6055 | Email: mp@masterpneumatic.com

JM 1-22-03
REV 12-2-05
(ECN 4090)

Dimensional Specifications



KEY	FCD380-3 FC380-3	FCD380-4 FC380-4	FCD380-6 FC380-6
A	3 1/2 (88 mm)	3 1/2 (88 mm)	3 1/2 (88 mm)
B	2 7/8 (73 mm)	2 7/8 (73 mm)	2 7/8 (73 mm)
C	1 3/32 (28 mm)	1 3/32 (28 mm)	1 3/32 (28 mm)
D	7 11/16 (195 mm)	7 11/16 (195 mm)	7 11/16 (195 mm)
E	1 1/16 (27 mm)	1 1/16 (27 mm)	1 1/16 (27 mm)

KEY	BFCD380-3 BFC380-3	BFCD380-4 BFC380-4	BFCD380-6 BFC380-6
A	3 1/2 (88 mm)	3 1/2 (88 mm)	3 1/2 (88 mm)
B	3 3/32 (79 mm)	3 3/32 (79 mm)	3 3/32 (79 mm)
C	1 3/32 (28 mm)	1 3/32 (28 mm)	1 3/32 (28 mm)
D	7 37/64 (193 mm)	7 37/64 (193 mm)	7 37/64 (193 mm)
E	1 1/16 (27 mm)	1 1/16 (27 mm)	1 1/16 (27 mm)

General Specifications

WORKING PRESSURE MAX

TRANSPARENT BOWL

150 PSI @ 125°F
(10.3 Bar @ 51.7°C)

METAL BOWL

200 PSI @ 175°F
(13.8 Bar @ 65.5°C)

PREFIX OPTION (REPLACES FCD380)

FC380 Plastic Bowl, Manual Drain
BFC380 Metal Bowl, Manual Drain
BFC380H Extended Metal Bowl, Manual Drain
BFCD380 Metal Bowl, Auto Drain
BFCD380H Extended Metal Bowl, Auto Drain

SUFFIX OPTION

E8 0.01µm Element
LDC 1/4 NPT Female port (metal bowl only)

W BSP British (Whitworth) Threads
S8 3/4-16 SAE Threads
S10 7/8-14 SAE Threads

FILTERING: Standard 0.3µm Element

For optional Large Differential Pressure Gauges, Consult Factory.