



E100 Installation and Maintenance

MASTER PNEUMATIC, INC.

6701 -18 Mile Rd. | Sterling Heights, MI 48314 | Phone: (586) 254-1000 | Fax: (586) 254-6055 | Email: mp@masterpneumatic.com

SAMPLE PRODUCT NUMBERS:

E100-1
E100-2
BE100-1
BE100-2

THANK YOU!

You have just purchased a quality External Drain from Master Pneumatic.

With care in its installation and maintenance, you can expect it to have a long and economical service life. Before you go any further, please take a few minutes to look over this information, then save it for future reference and for the useful service information it contains.

Installation & Operation Procedures

NOTE: As of January 2008, the Hydro-Jector Float mechanism has been redesigned

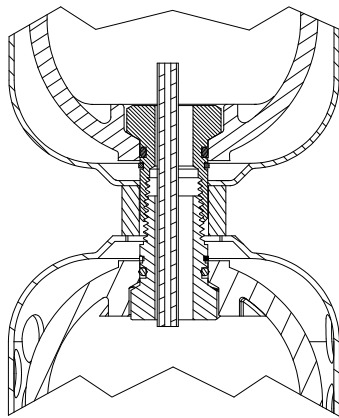


Figure 1. Hydro-Jector installed on Filter

Shown with 1/2" Piping

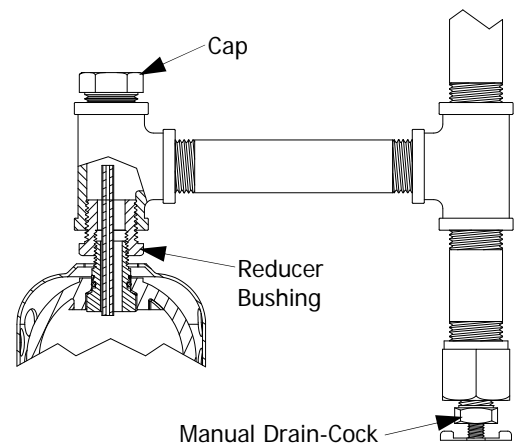


Figure 2. Drain-Leg System

INSTALLATION ON FILTER:

1. Depressurize and lockout air pressure.
2. Filters must be purchased with "LDC" bowl option for use with Hydro-Jector.
3. For Plastic Bowl Filters: Install the Hydro-Jector by turning Adaptor (3) clockwise into the fitting at bottom of Filter Bowl with Spacer (2) as shown in Figure 1.
4. For Metal Bowl Filters: Install the Hydro-Jector by turning Adaptor (3) clockwise into the threaded port on bottom of Filter Bowl. The Spacer (2) is not needed.
5. DO NOT bend, crimp, or obstruct Vent Tube (1)
6. Install Tube Fitting into 1/8" NPT Drain Outlet Port (see page 3) in order to tube liquid drainage to a remote disposal point.

INSTALLATION (OTHER):

1. Depressurize and lockout air pressure.
2. Install Hydro-Jector at lowest drain point of Tank, Drain Leg, or other Vessel.
3. Install Hydro-Jector by turning Adaptor (3) clockwise into vessel. A Reducer Bushing may be required. The Spacer (2) is NOT needed.
4. For Drain Leg, it is recommended to install the Hydro-Jector at an offset, as shown in Figure 2, to allow bulk solids to be manually drained.
5. Do NOT bend, crimp, or obstruct the Vent Tube (1).
6. Install Tube Fitting into 1/8" NPT Drain Outlet Port (see page 3) in order to tube liquid drainage to a remote disposal point.

OPERATION:

1. To manually drain the Hydro-Jector pull down on Nut (14).
2. Replace Plastic Bowls with metal if any signs of crazing or cracking are observed.



E100 Installation and Maintenance

MASTER PNEUMATIC, INC.

6701 -18 Mile Rd. | Sterling Heights, MI 48314 | Phone: (586) 254-1000 | Fax: (586) 254-6055 | Email: mp@masterpneumatic.com

Parts Listing

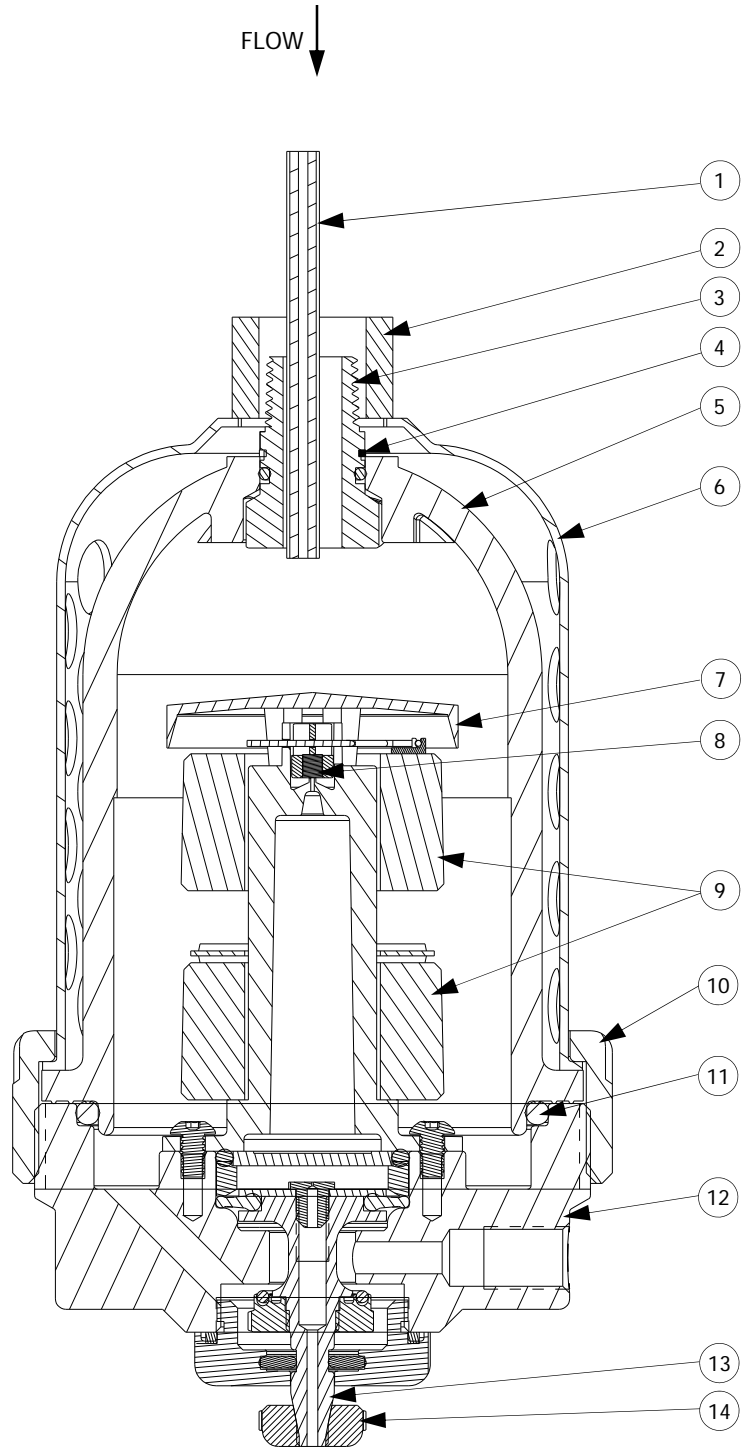
| KEY | DESCRIPTION |
|-----|----------------|
| 1 | Vent Tube |
| 2 | Spacer |
| 3 | Adaptor |
| 4 | Retaining Ring |
| 5 | Plastic Bowl |
| 6 | Shatterguard |
| 7 | Baffle |
| 8 | Valve Seal |
| 9 | Float Assembly |
| 10 | Bowl Ring |
| 11 | O-Ring |
| 12 | Hydro Body |
| 13 | Piston |
| 14 | Nut |

REPLACEMENT BOWL KIT

| DESCRIPTION | PART NUMBER |
|--|-------------|
| HYDRO METAL BOWL KIT: vent tube, spacer, adaptor, retaining ring, metal bowl with sight glass, o-rings and gasket. | ABE156-6M |
| HYDRO PLASTIC BOWL KIT: vent tube, spacer, adaptor, retaining ring, poly bowl with shatterguard, o-rings and gasket. | AE156-6M |
| HYDRO FLOAT KIT: baffle, valve seal, and float assembly. | A802-37 |

BOWL KIT NOTE:

1. For Black Anodized Aluminum Hydro Body (#12) use O-ring (#11).
2. For obsolete, Brass Hydro Body (#12) use flat Gasket (not shown).



E100-2 Illustrated



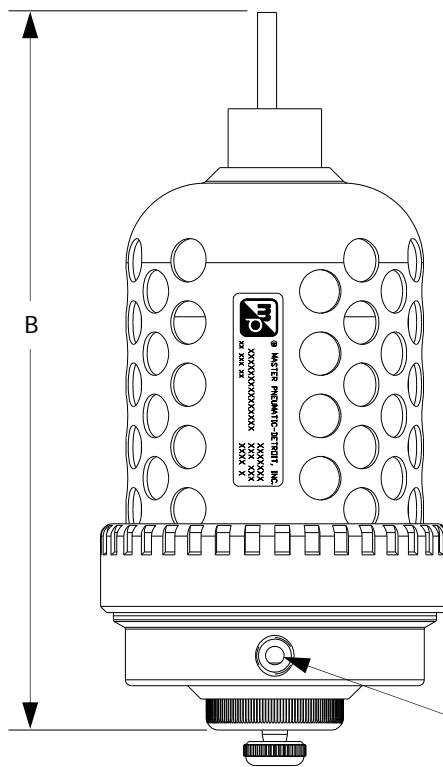
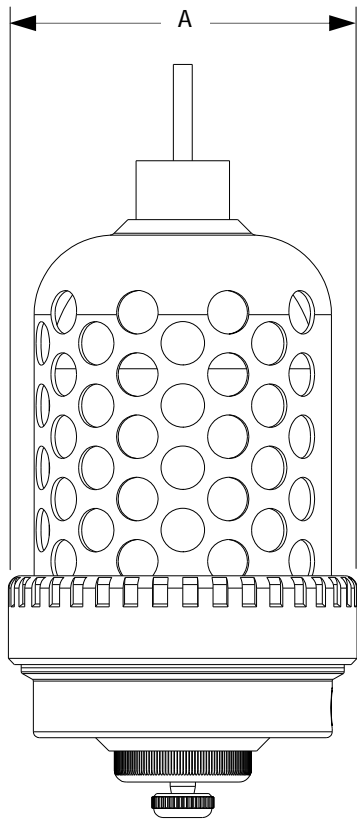
E100 Installation and Maintenance

MASTER PNEUMATIC, INC.

6701 -18 Mile Rd. | Sterling Heights, MI 48314 | Phone: (586) 254-1000 | Fax: (586) 254-6055 | Email: mp@masterpneumatic.com

Dimensional Specifications

| KEY | DIMENSION |
|-----|-------------------|
| A | 3 1/2 (89 mm) |
| B | 7 3/8 (187 mm) |



Drain Outlet Port

